



1375

NW MALL ST.
SUITE 3
ISSAQUAH, WA



*Imagine Your New
Office Here*

For Lease
1,562 sq. ft.
Office Space

FOR LEASE: 1,562 SF Office Space

Neighborhood Amenities

- 20 minutes to Seattle, 15 minutes to Bellevue, 5 minutes to trails
- Excellent access via SR 900, Gilman Blvd. and I-90 w/128k vehicles/day
- Walking distance to restaurants, banks, fitness options and retail
- Proximity to Issaquah Transit Center
- Active, high-energy neighborhood with strong commerce
- Entertainment & recreational options nearby
- Close to Lake Sammamish & Tibbetts Valley Park

Space Features

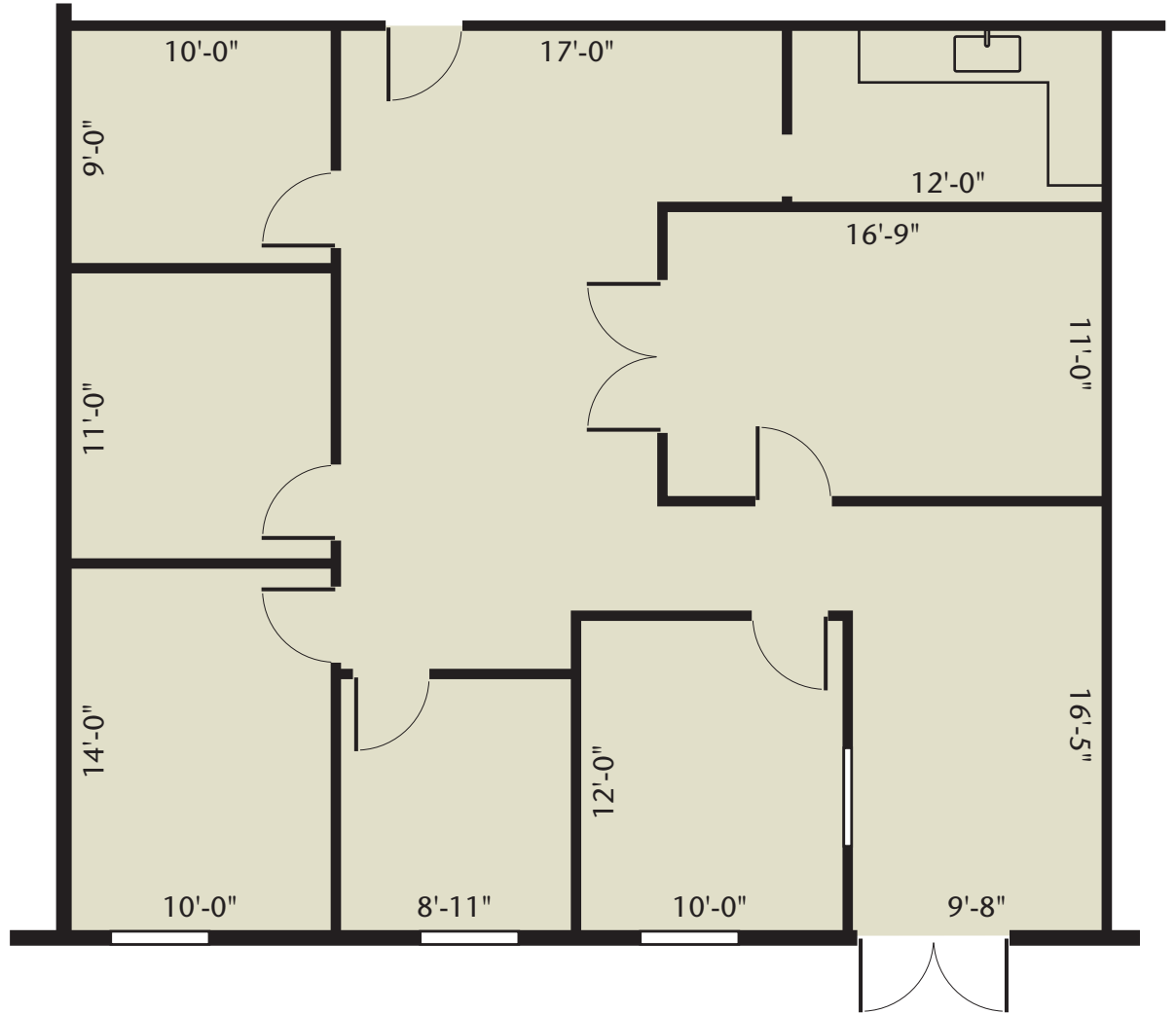
- Approximately 1,562 sq ft
- Efficient floor plan offers private offices, conference room and open work space
- Lobby/Reception area
- IT Storage Room and Kitchenette

Building Amenities

- One block south of Gilman Blvd. and east of SR900
- Operable windows allow fresh air
- Adjacent to pocket park
- Parking 4/1000



Floor Plan



For leasing information, contact:

Kelly Richardson
Designated Broker
425-395-9577
kellyr@rowleyproperties.com

The information contained herein has been obtained from reliable sources, but is not guaranteed. Photos may not reflect available space.





With convenient access to transit and I-90, Rowley Center has urban character, walkability and ample amenities. It is an active, more high-energy neighborhood with strong commerce, entertainment, service and recreational opportunities. The future heart of the neighborhood will be a public plaza with a vibrant atmosphere.



Community known for innovation & start-ups



Close to upscale hotels and dining



Adjacent to Transit Center



20 minutes to Seattle, 15 minutes to Bellevue



1375

NW MALL ST.
SUITE 3
ISSAQUAH, WA

**For leasing
information, contact:**

Kelly Richardson
Designated Broker
425-395-9577
kellyr@rowleyproperties.com



Rowley Properties is a third-generation, family business that owns, develops and manages approximately 80 contiguous acres in downtown Issaquah.

Nobody knows Issaquah better than Rowley Properties.

1595 NW Gilman Blvd., Suite 1
Issaquah, WA 98027
(425) 392-6407

Office hours: Monday-Saturday;
8:00am-5:00pm

rowleyproperties.com