





# For Lease

1275 12<sup>TH</sup> Avenue NW Ste. 10, Issaquah, WA, 98027

## Work Smarter in Issaquah

1275 12th Ave NW, Suite 10 delivers a bright and functional setting for focus and collaboration. This 632 sf suite combines a private office with open workspace, framed by large windows, abundant natural light, and views of Cougar Mountain. A clean interior and adaptable layout make it an ideal choice for growing teams or professionals ready for their next step.

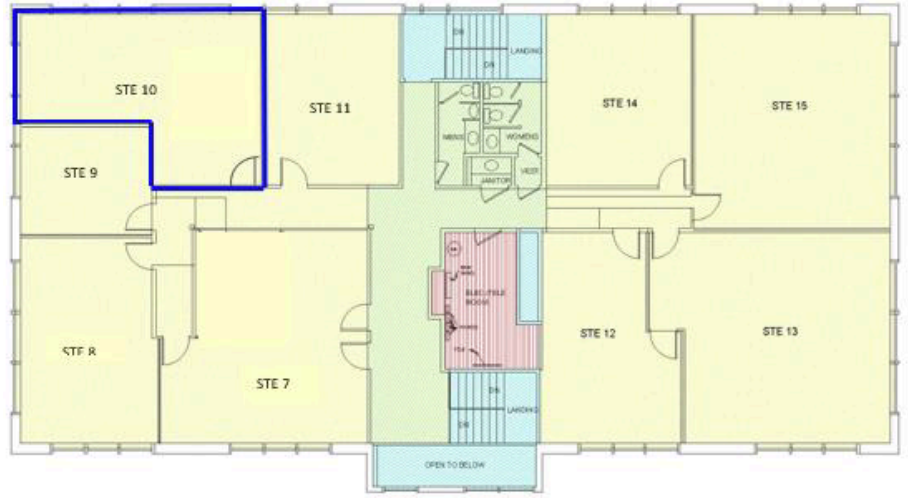
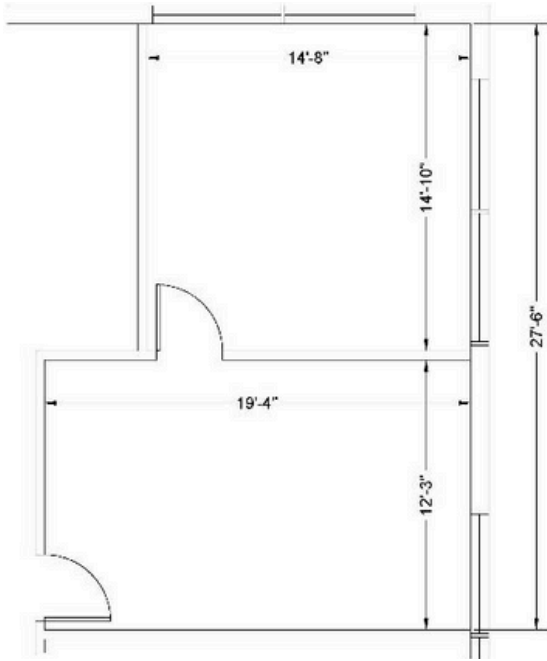
## Location

-  Approximately 632 sf
-  Located East of SR900 and North of Maple Street

## Features

- Collaborative workspace
- Private Office & Open Workspace OR two private offices
- Second floor suite features large windows and plenty of natural light
- Fantastic views of Cougar Mountain
- High-speed internet
- Ample parking

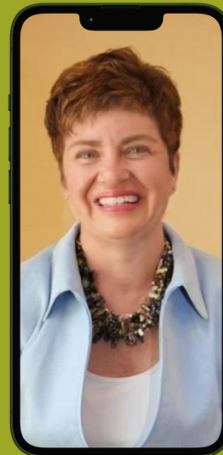
**Schedule a viewing today!**



# Your launchpad is waiting.

## Neighborhood Amenities

- 20 minutes to Seattle, 15 minutes to Bellevue, 5 minutes to Trails
- Located at Exit 15 off I-90
- Excellent access via SR 900, Gilman Blvd and I-90 with 128,000 vehicles per day
- Adjacent to Issaquah Transit Center
- Walking Distance to restaurants, banks, retail and fitness options



**Interested?  
Give us a call!**

**Kelly Richardson**

425.395.9577

kellyr@rowleyproperties.com

1595 NW Gilman Blvd., Suite 1 Issaquah, WA 98027

[www.rowleyproperties.com](http://www.rowleyproperties.com)