



1505

NW GILMAN BLVD.
SUITE 8
ISSAQUAH, WA



Gilman Blvd. Visibility

For Lease
1,788 sq. ft.
Office Space

FOR LEASE: 1,788 SF Office Space

Neighborhood Amenities

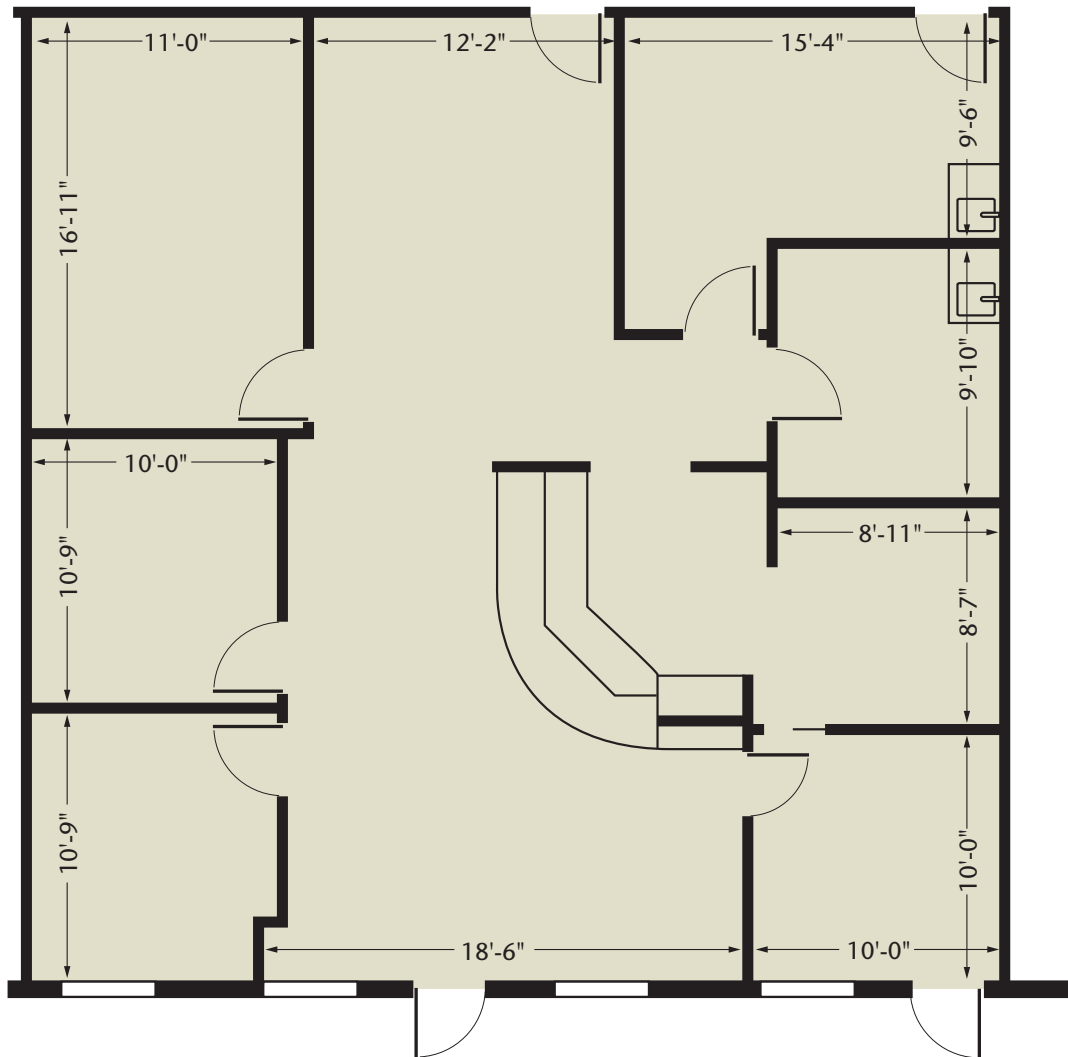
- 20 minutes to Seattle, 15 minutes to Bellevue, 5 minutes to trails
- Located at the gateway to Issaquah at I-90 Exit 15
- Excellent access via SR 900, Gilman Blvd. and I-90 with 128k vehicles/day
- Walking distance to restaurants, banks, fitness options and retail
- Proximity to Issaquah Transit Center
- Active, high-energy neighborhood with strong commerce
- Entertainment & recreational options nearby
- Close to Lake Sammamish & Tibbetts Valley Park

Space Features

- Newly designed efficient floor plan with new finishes
- Open work area
- Multiple private offices
- Break room
- Conference room
- Storage / IT area
- Large reception desk w/ built-in cabinets
- Secondary private entrance to executive office



Floor Plan



The information contained herein has been obtained from reliable sources, but is not guaranteed. Photos may not reflect available space.

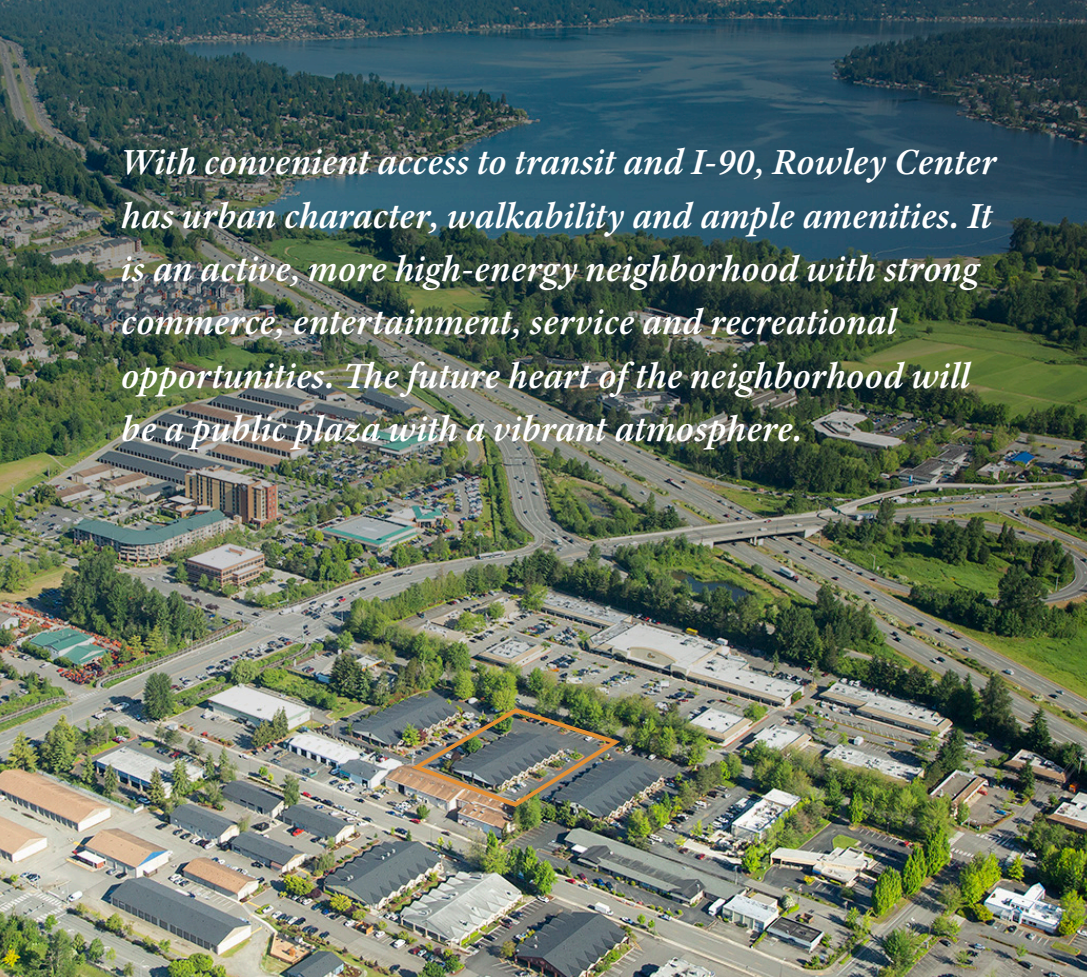
For leasing information, contact:

Kelly Richardson
Designated Broker

425-395-9577

kellyr@rowleyproperties.com





With convenient access to transit and I-90, Rowley Center has urban character, walkability and ample amenities. It is an active, more high-energy neighborhood with strong commerce, entertainment, service and recreational opportunities. The future heart of the neighborhood will be a public plaza with a vibrant atmosphere.



Community known for innovation & start-ups



Close to upscale hotels and dining



Adjacent to Transit Center



20 minutes to Seattle, 15 minutes to Bellevue



1505

NW GILMAN BLVD.

SUITE 8

ISSAQUAH, WA

**For leasing information,
contact:**

Kelly Richardson

Designated Broker

425-395-9577

kellyr@rowleyproperties.com



Rowley Properties is a third-generation, family business that owns, develops and manages approximately 80 contiguous acres in downtown Issaquah.

Nobody knows Issaquah better than Rowley Properties.

1595 NW Gilman Blvd., Suite 1
Issaquah, WA 98027
(425) 392-6407

Office hours: Monday-Saturday;
8:00am-5:00pm

rowleyproperties.com