

Location

- Approximately 582 sf
- Located South of Gilman Blvd and North of Mall Street
- 1275 12th Avenue NW Suite 1A Issaquah, WA 98027

Features

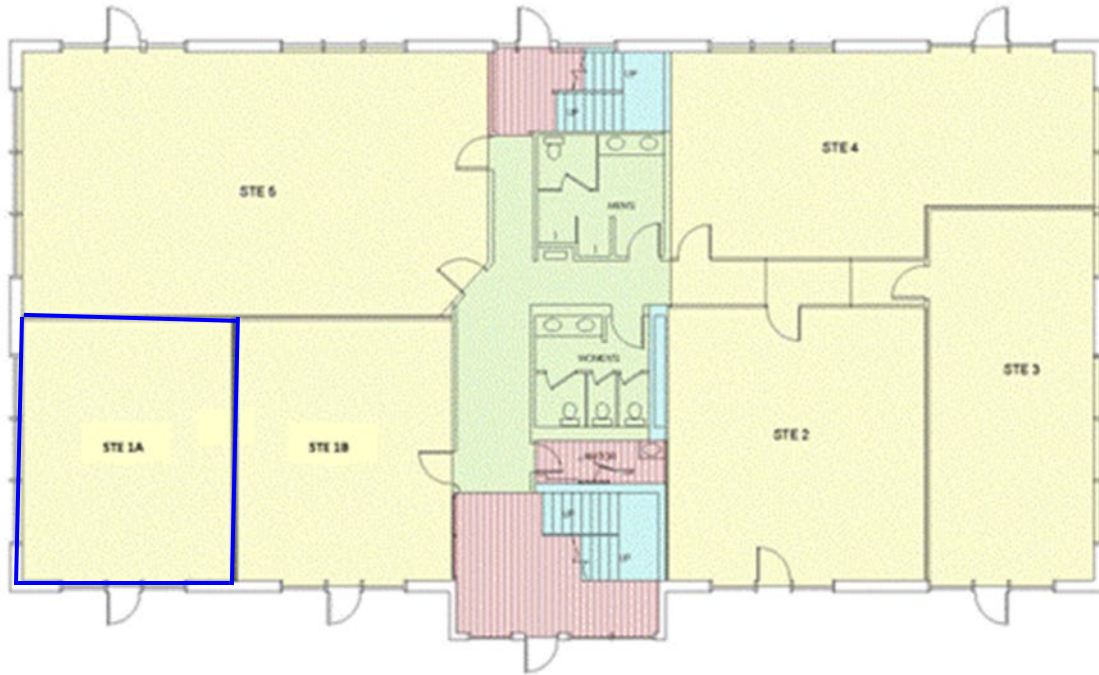
- First Floor Location
- Corner Suite with Private Entry
- Private Offices & Lobby Area
- Large Floor to Ceiling Windows Provide Ample Natural Light
- Ample Parking

Neighborhood Amenities

- 20 minutes to Seattle, 15 minutes to Bellevue, 5 minutes to Trails
- Located at the Gateway to Issaquah at I-90 Exit 15
- Excellent access via SR 900, Gilman Blvd and I-90 with 128,000 vehicles per day
- Adjacent to Issaquah Transit Center
- Walking Distance to restaurants, banks, retail and fitness options

Change Your Office. Change Your Life.





Marvin Stein Associates, LLC
planning design
2025 Falls Avenue, Seattle, Washington 98101 (206) 441-0448

FIRST FLOOR PLAN



NORTH

