

1495

NW GILMAN BLVD.

SUITE 6

ISSAQUAH, WA



*Excellent Gilman Blvd.
Location – Imagine Your
Business Here*

For Lease
1,949 sq. ft.
Office Space

FOR LEASE: 1,949 SF Office Space

Neighborhood Amenities

- 20 minutes to Seattle, 15 minutes to Bellevue, 5 minutes to Trails
- Located at the gateway to Issaquah at I-90 Exit 15
- Excellent access via SR 900, Gilman Blvd. and I-90 w/ 128k vehicles/day
- Walking distance to restaurants, banks, fitness options and retail
- Proximity to Issaquah Transit Center
- Active, high-energy neighborhood with strong commerce
- Entertainment & recreational options nearby
- Close to Lake Sammamish & Tibbetts Valley Park

Space Features

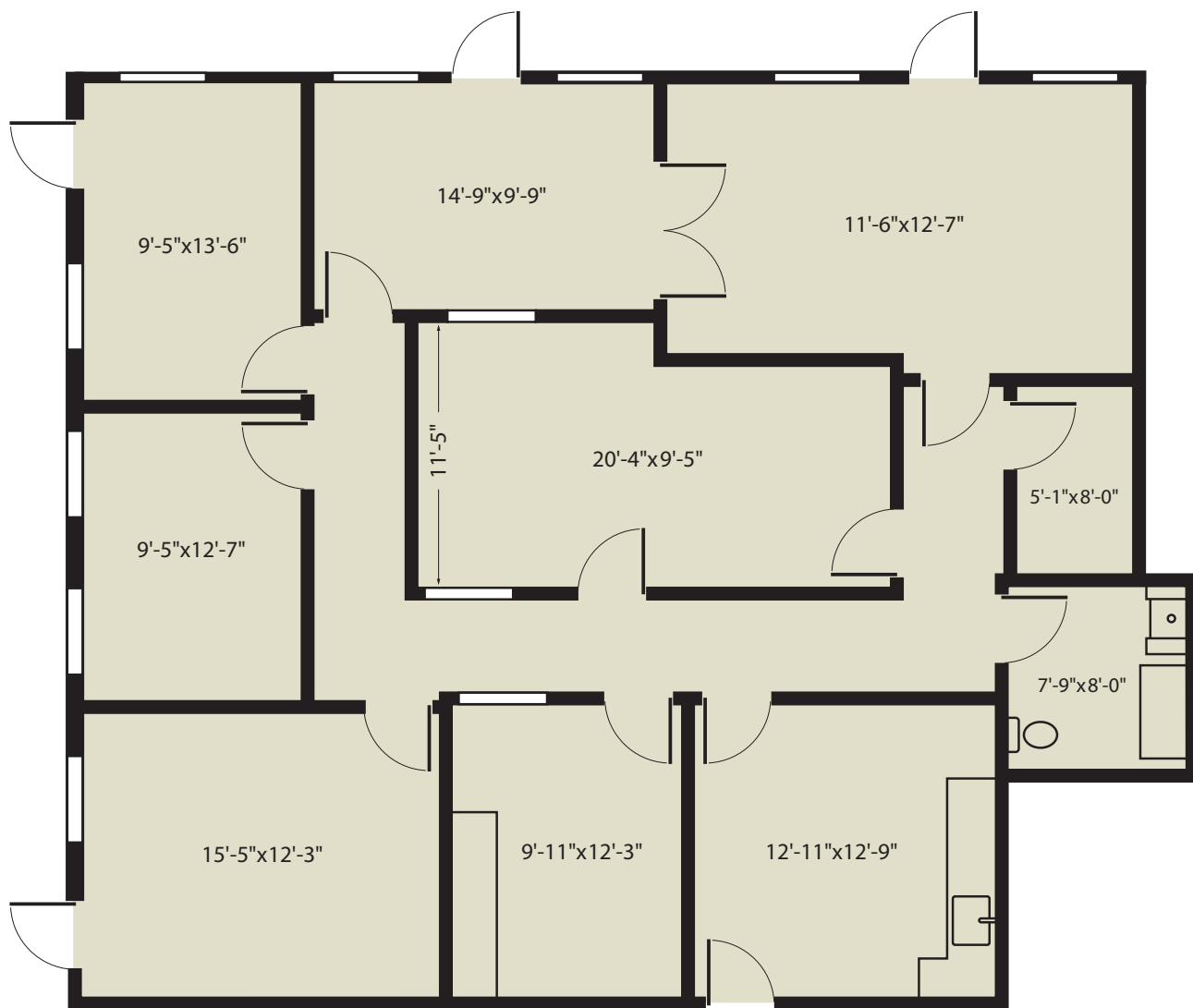
- Several private offices & conference room
- Corner office with private entry
- Lobby/reception area
- Kitchenette/breakroom
- En-suite bathroom
- IT/storage closet
- Operable windows allow fresh air

Building Amenities

- Ample free parking
- High-speed internet



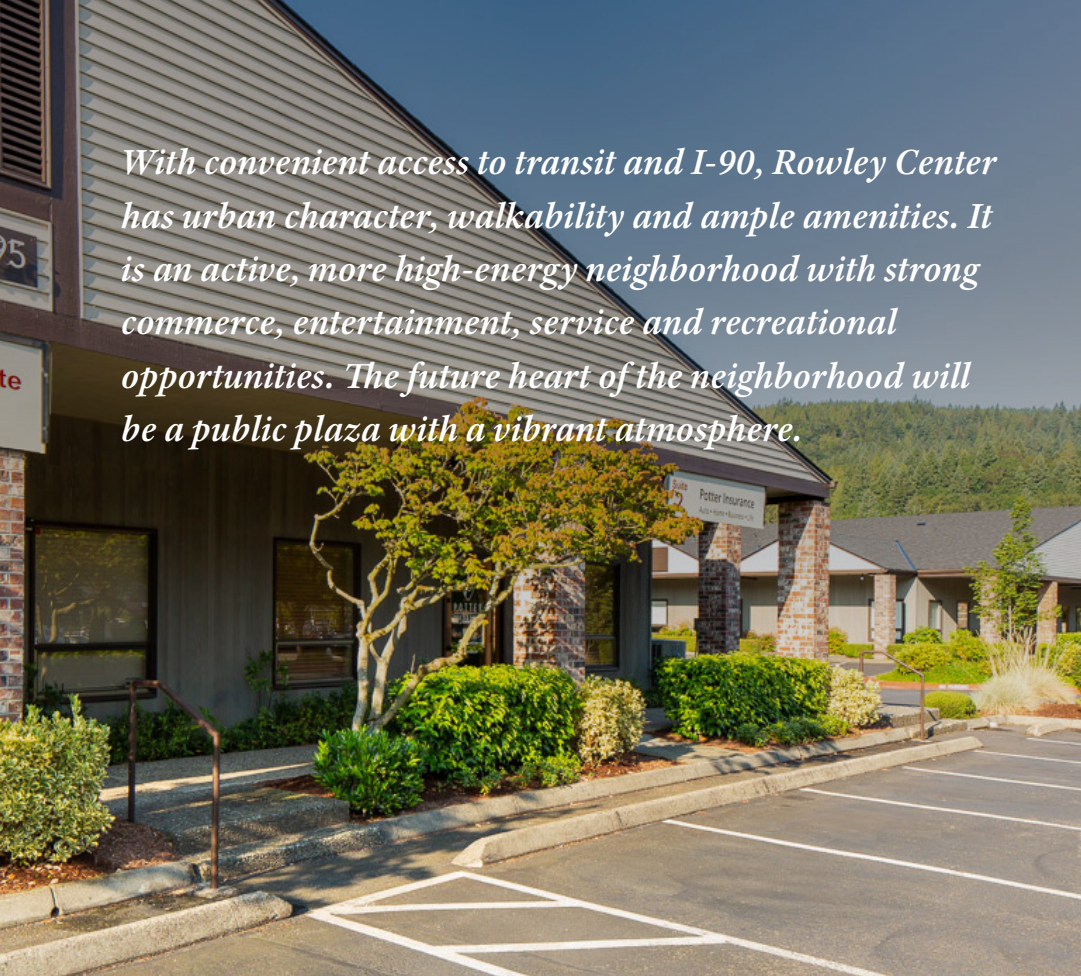
Floor Plan



For leasing
information,
contact:

Kelly Richardson
Designated Broker
425-395-9580
kellyr@rowleyproperties.com

The information contained herein has been obtained from
reliable sources, but is not guaranteed. Photos may not
reflect available space.



With convenient access to transit and I-90, Rowley Center has urban character, walkability and ample amenities. It is an active, more high-energy neighborhood with strong commerce, entertainment, service and recreational opportunities. The future heart of the neighborhood will be a public plaza with a vibrant atmosphere.



Community known for innovation & start-ups



Close to upscale hotels and dining



Adjacent to Transit Center



20 minutes to Seattle, 15 minutes to Bellevue



1495

NW GILMAN BLVD.

SUITE 6

ISSAQUAH, WA

**For leasing information,
contact:**

Kelly Richardson

Designated Broker

425-395-9580

kellyr@rowleyproperties.com



Rowley Properties is a third-generation, family business that owns, develops and manages approximately 80 contiguous acres in downtown Issaquah.

Nobody knows Issaquah better than Rowley Properties.

1595 NW Gilman Blvd., Suite 1
Issaquah, WA 98027
(425) 392-6407

Office hours: Monday-Saturday;
8:00am-5:00pm

rowleyproperties.com