

### Location

- 1275 12<sup>th</sup> Avenue NW Suite 5
- Approximately 1,257 sf
- Located 1 block South of Gilman Blvd.
- Adjacent to Issaquah Transit Center

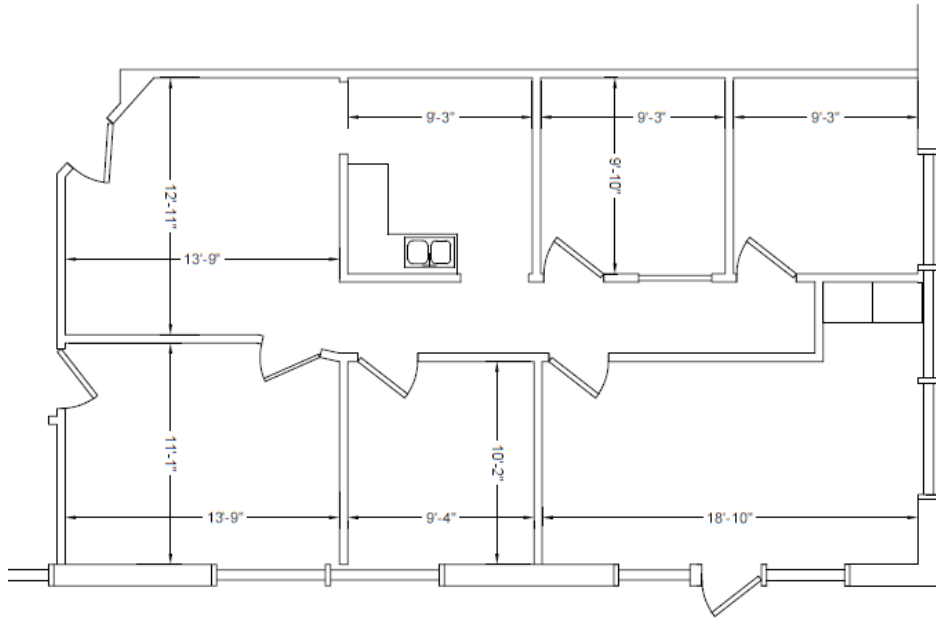
### Features

- First floor corner suite offers plenty of natural light
- Reception Area, Private Offices and Conference Room
- Kitchenette
- Private Entry
- High-speed internet
- Ample parking

### Neighborhood Amenities

- 20 minutes to Seattle, 15 minutes to Bellevue, 5 minutes to Trails
- Located at the Gateway to Issaquah at I-90 Exit 15
- Excellent access via SR 900, Gilman Blvd. and I-90 with 128,000 vehicles per day
- Walking distance to restaurants, banks, retail and fitness options





1275 12th Ave NW (07-09-07) - Floor 01



Marvin Stein Associates, LLC  
planning & design  
2000 1st Avenue North, Tukwila WA 98148 (206) 402-1444

FIRST FLOOR PLAN

