

Location

- 1275 12th Avenue NW Suite 11
- Approximately 368 sf
- Located 1 block South of Gilman Blvd.
- Adjacent to Issaquah Transit Center

Features

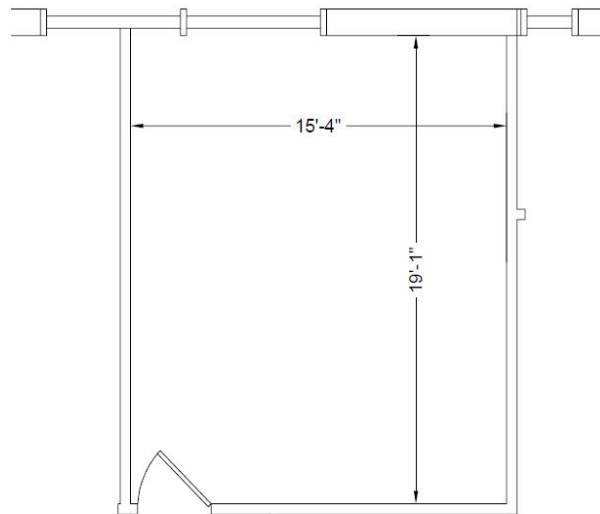
- Collaborative workspace, perfect for 1 or 2 ppl
- Large Open Work Area
- Second floor suite offers plenty of natural light and mountain views
- High-speed internet
- Ample parking

Neighborhood Amenities

- 20 minutes to Seattle, 15 minutes to Bellevue, 5 minutes to Trails
- Located at the Gateway to Issaquah at I-90 Exit 15
- Excellent access via SR 900, Gilman Blvd. and I-90 with 128,000 vehicles per day
- Walking distance to restaurants, banks, retail and fitness options



View [The Law of Real Estate Agency](#) for Washington State. The information contained in this document and any attachment may be confidential and/or legally privileged and has been sent for the sole use of the intended recipient. If you are not an intended recipient, you are not authorized to review, use, disclose or copy any of its contents.



Floor Plan

1275 12th Ave NW (07-09-07) - Floor 02

