

Location

- 1275 12th Avenue NW Suite 10
- Approximately 632 sf
- Located 1 block South of Gilman Blvd.
- Adjacent to Issaquah Transit Center

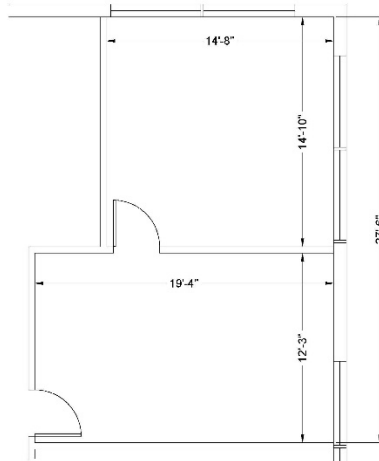
Features

- Collaborative workspace, perfect for 1 or 2 ppl
- Private Office & Reception Area
- Second floor suite offers plenty of natural light and mountain views
- High-speed internet
- Ample parking

Neighborhood Amenities

- 20 minutes to Seattle, 15 minutes to Bellevue, 5 minutes to Trails
- Located at the Gateway to Issaquah at I-90 Exit 15
- Excellent access via SR 900, Gilman Blvd. and I-90 with 128,000 vehicles per day
- Walking distance to restaurants, banks, retail and fitness options





Floor Plan

1275 12th Ave NW (07-09-07) - Floor 02

