

Location

- Approximately 412 sf
- Located South of Gilman Blvd and North of Maple Street
- 1275 12th Avenue NW Suite 14
Issaquah, WA 98027

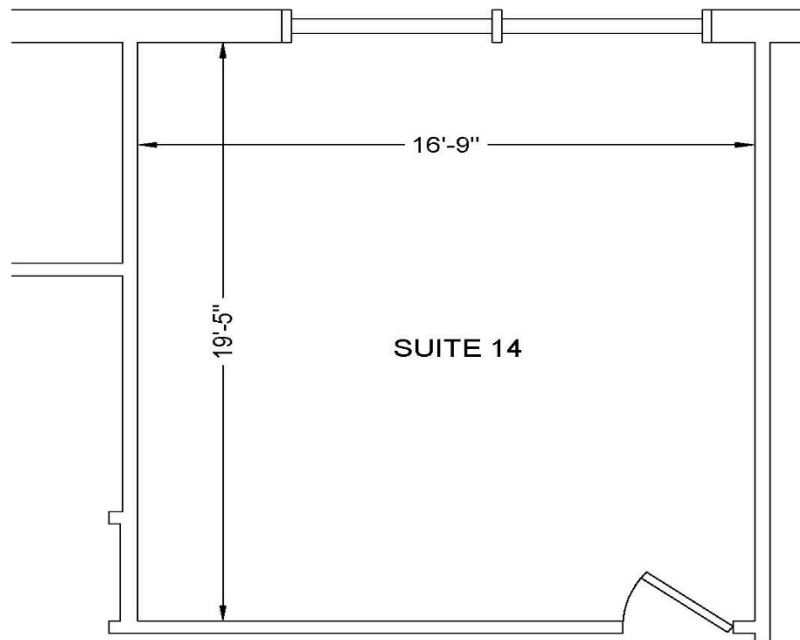
Features

- Second Floor Location
- Open Work Space for Multiple Work Stations or Collaborative Space
- Large Windows Provide Ample Natural Light and View of Mountains
- Ample Parking

Neighborhood Amenities

- 20 minutes to Seattle, 15 minutes to Bellevue, 5 minutes to Trails
- Located at the Gateway to Issaquah at I-90 Exit 15
- Excellent access via SR 900, Gilman Blvd and I-90 with 128,000 vehicles per day
- Adjacent to Issaquah Transit Center
- Walking Distance to restaurants, banks, retail and fitness options





Floor Plan