



# 1595

NW GILMAN BLVD.  
SUITE 13  
ISSAQUAH, WA



*Excellent Gilman Blvd.  
Visibility*

For Lease  
763 sq. ft.  
Office Space



# *FOR LEASE: 763 SF Office Space*

## Neighborhood Amenities

- 20 minutes to Seattle, 15 minutes to Bellevue, 5 minutes to Trails
- Located at the gateway to Issaquah at I-90 Exit 15
- Excellent access via SR 900, Gilman Blvd. and I-90 w/ 128k vehicles/day
- Walking distance to restaurants, banks, fitness options and retail
- Proximity to Issaquah Transit Center
- Active, high-energy neighborhood with strong commerce
- Entertainment & recreational options nearby
- Close to Lake Sammamish & Tibbetts Valley Park

## Space Features

- Corner suite offers lots of natural light
- Private Offices and/or Conference Room
- Lobby Area/Reception
- Operable windows allow fresh air

## Building Amenities

- Ample free parking
- Adjacent to private park

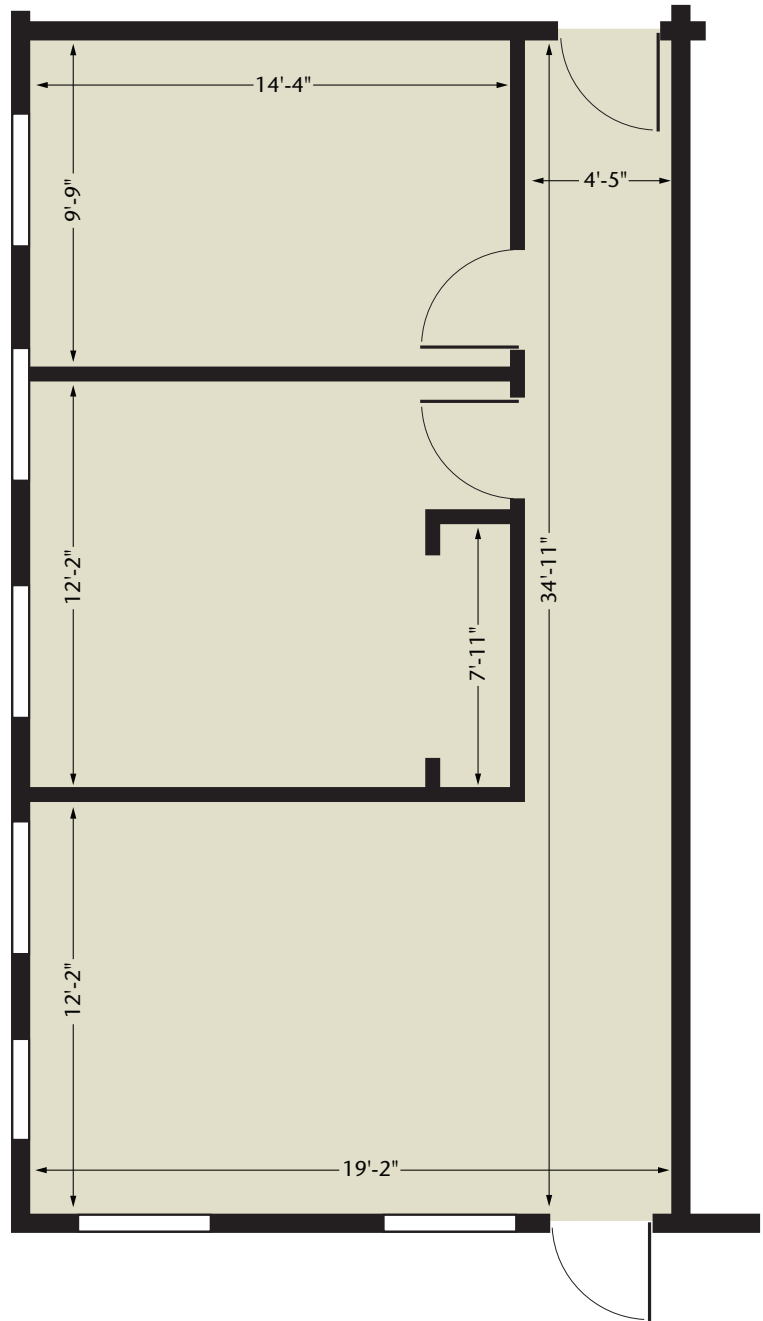


## Floor Plan

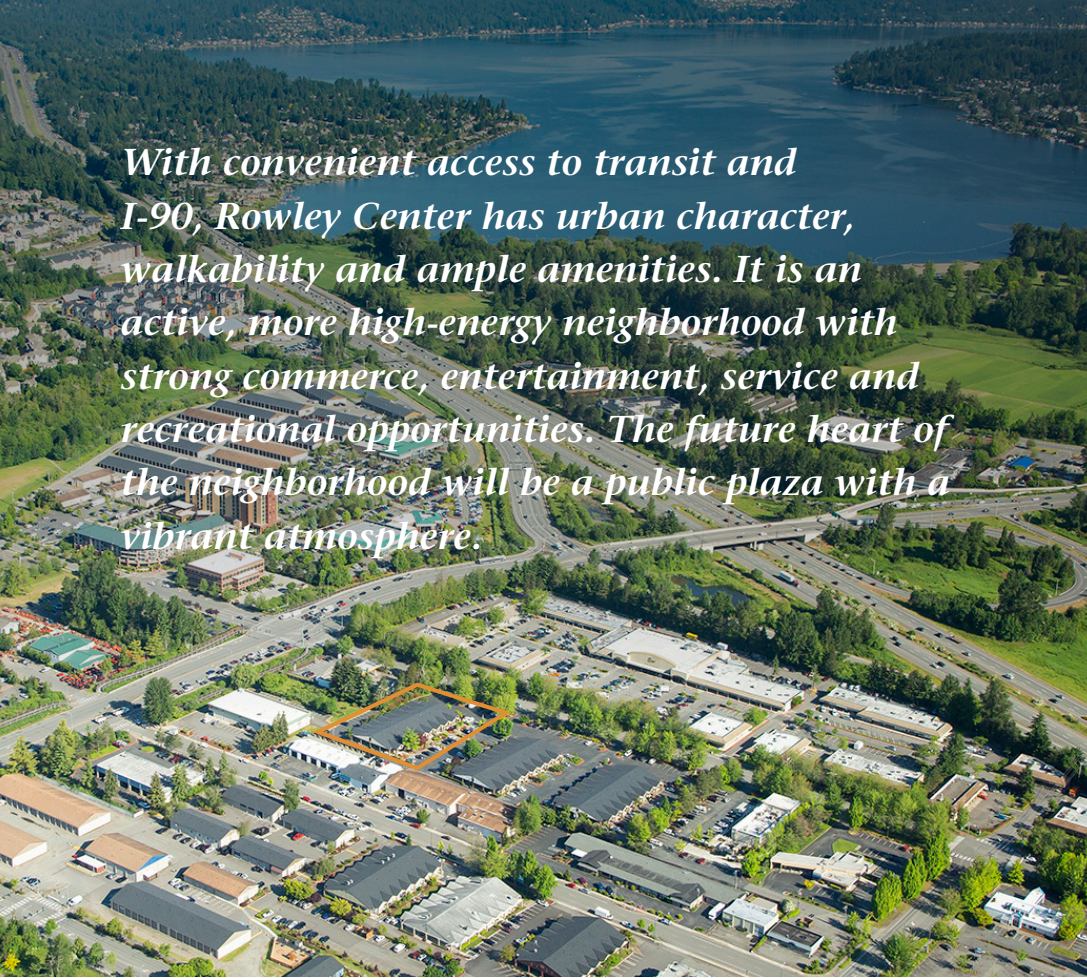
For leasing  
information, contact:

Kelly Richardson  
Designated Broker  
425-395-9577  
[kellyr@rowleyproperties.com](mailto:kellyr@rowleyproperties.com)

The information contained herein has  
been obtained from reliable sources,  
but is not guaranteed. Photos may not  
reflect available space.







*With convenient access to transit and I-90, Rowley Center has urban character, walkability and ample amenities. It is an active, more high-energy neighborhood with strong commerce, entertainment, service and recreational opportunities. The future heart of the neighborhood will be a public plaza with a vibrant atmosphere.*



Community known for innovation & start-ups



Close to upscale hotels and dining



Adjacent to Transit Center



20 minutes to Seattle, 15 minutes to Bellevue





# 1595

NW GILMAN BLVD.

SUITE 13

ISSAQUAH, WA

**For leasing  
information, contact:**

Kelly Richardson  
Designated Broker

425-395-9577

[kellyr@rowleyproperties.com](mailto:kellyr@rowleyproperties.com)



Rowley Properties is a third-generation, family business that owns, develops and manages approximately 80 contiguous acres in downtown Issaquah.

Nobody knows Issaquah better than Rowley Properties.

1595 NW Gilman Blvd., Suite 1  
Issaquah, WA 98027  
(425) 392-6407

Office hours: Monday-Saturday;  
8:00am-5:00pm

[rowleyproperties.com](http://rowleyproperties.com)