



1680

NW MALL STREET
SUITE 3
ISSAQUAH, WA



*Highly Visible Retail
Space*

For Lease
5,000 sq. ft. Space

FOR LEASE: 5,000 SF Highly Visible Retail Space

Neighborhood Amenities

- Excellent access via SR 900, Gilman Blvd. and I-90 w/128k vehicles/day
- 20 minutes to Seattle, 15 minutes to Bellevue
- Walking distance to restaurants, banks, fitness options and retail
- Proximity to Issaquah Transit Center
- Nearby Costco headquarters
- Active, high-energy neighborhood with strong commerce
- Entertainment & recreational options nearby
- Close to Lake Sammamish & Tibbetts Valley Park
- 5 minutes to trails

Space Features

- Approximately 5,000 sf of retail space available
- Approximately 11' roll-up door in rear
- Approximately 13' high ceilings
- Covered store front entrance door
- Separately controlled HVAC

Building Amenities

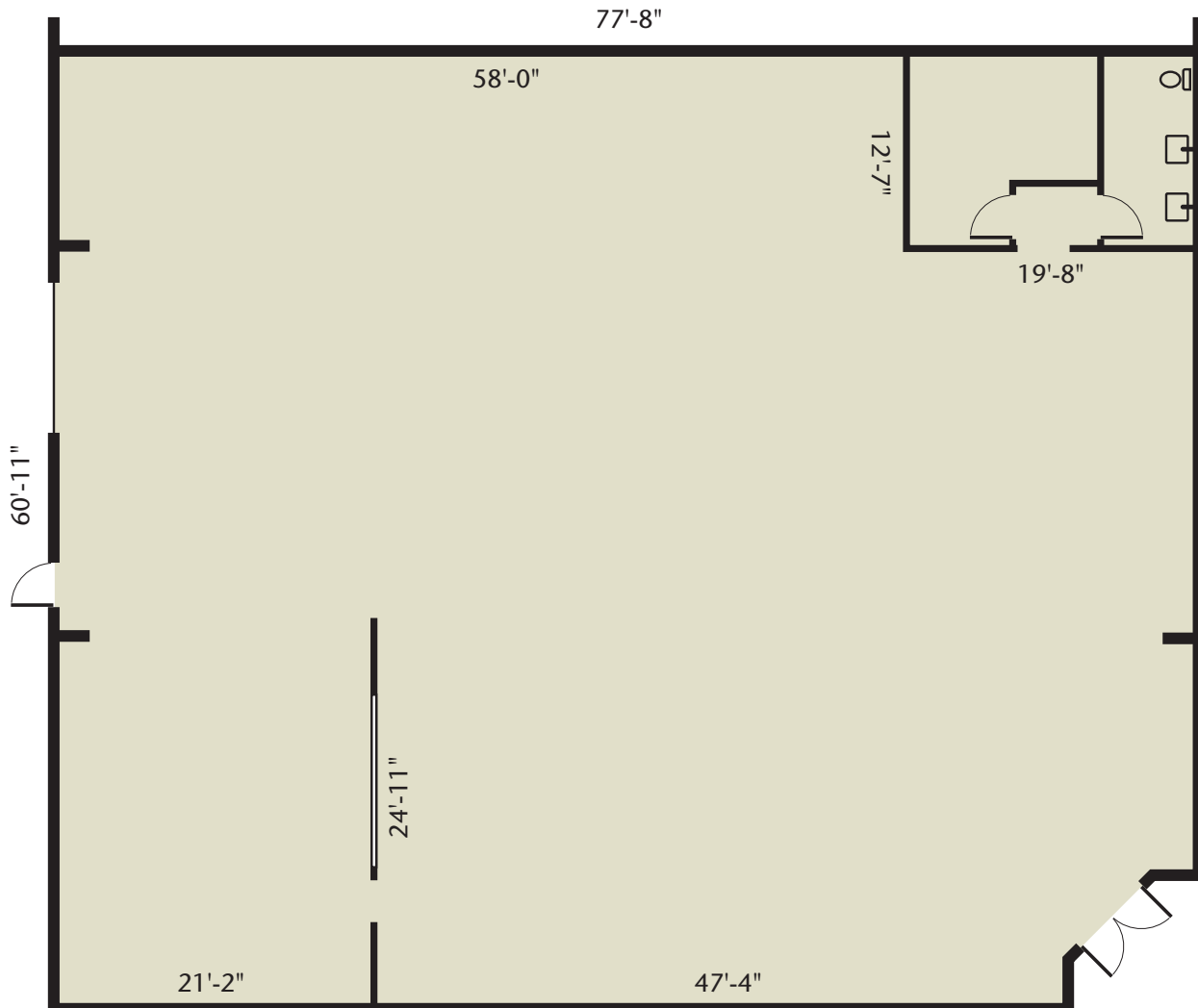
- Located on high visibility corner at Mall Street and SR-900
- Signage opportunity
- Three phase power
- Exterior building lights
- Parking 4/1000
- Ample free parking
- Adjacent to private park for tenant use



Floor Plan

For leasing information,
contact:

Kelly Richardson
Designated Broker
425-395-9577
kellyr@rowleyproperties.com



The information contained herein has been obtained from reliable sources, but is not guaranteed. Photos may not reflect available space.





With convenient access to transit and I-90, Rowley Center has urban character, walkability and ample amenities. It is an active, more high-energy neighborhood with strong commerce, entertainment, service and recreational opportunities. The future heart of the neighborhood will be a public plaza with a vibrant atmosphere.



Community known for innovation & start-ups



Close to upscale hotels and dining



Adjacent to Transit Center



20 minutes to Seattle, 15 minutes to Bellevue



1680

NW MALL STREET
SUITE 3
ISSAQUAH, WA

**For leasing
information, contact:**

Kelly Richardson
Designated Broker
425-395-9577
kellyr@rowleyproperties.com



Rowley Properties is a third-generation, family business that owns, develops and manages approximately 80 contiguous acres in downtown Issaquah.

Nobody knows Issaquah better than Rowley Properties.

1595 NW Gilman Blvd., Suite 1
Issaquah, WA 98027
(425) 392-6407

Office hours: Monday-Saturday;
8:00am-5:00pm

rowleyproperties.com