



1595

NW GILMAN BLVD.
SUITE 7
ISSAQUAH, WA



*Rare Gilman Blvd.
Location*

For Lease
875 sq. ft.
Office Space

FOR LEASE: 875 SF Office Space

Neighborhood Amenities

- 20 minutes to Seattle, 15 minutes to Bellevue, 5 minutes to Trails
- Located at the gateway to Issaquah at I-90 Exit 15
- Excellent access via SR 900, Gilman Blvd. and I-90 w/ 128k vehicles/day
- Walking distance to restaurants, banks, fitness options and retail
- Proximity to Issaquah Transit Center
- Active, high-energy neighborhood with strong commerce
- Entertainment & recreational options nearby
- Close to Lake Sammamish & Tibbetts Valley Park

Space Features

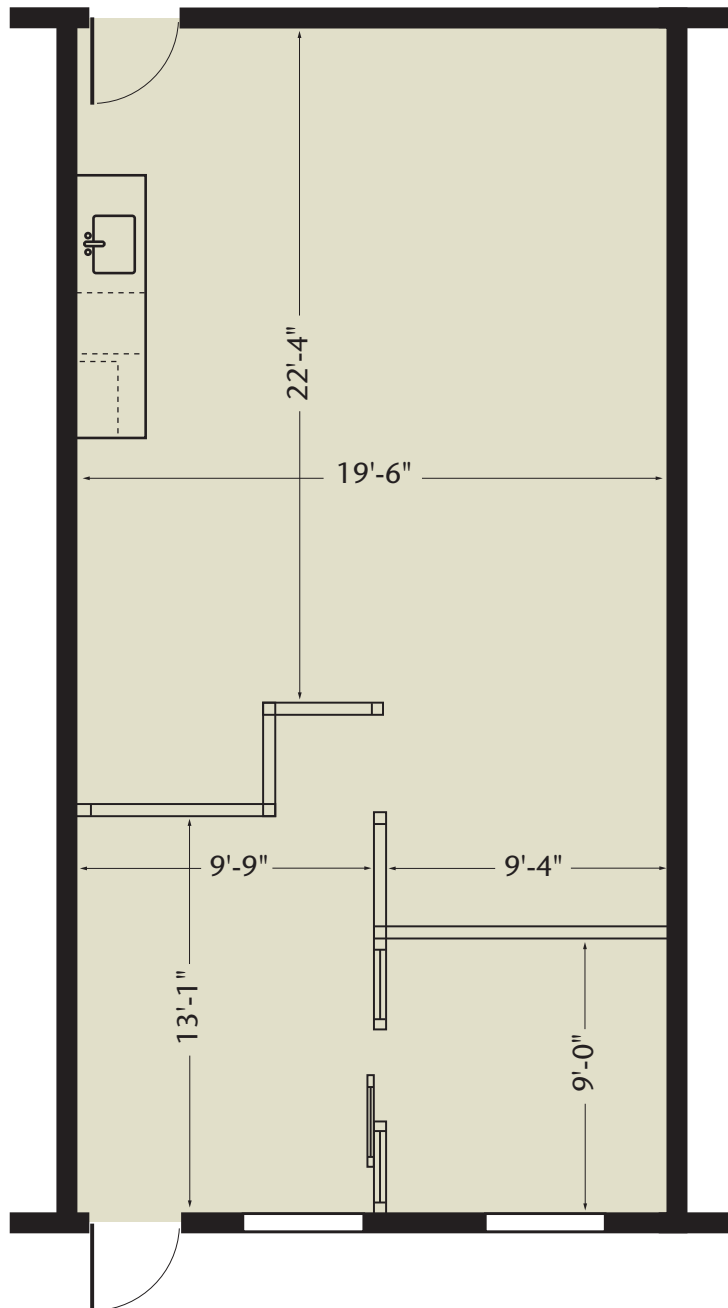
- Operable windows allow fresh air
- Private conference room w/DIRT glass walls offering privacy
- Open work space
- Lobby area
- Small kitchenette

Building Amenities

- Parking 4/1000
- Ample free parking
- Adjacent to private park



Floor Plan



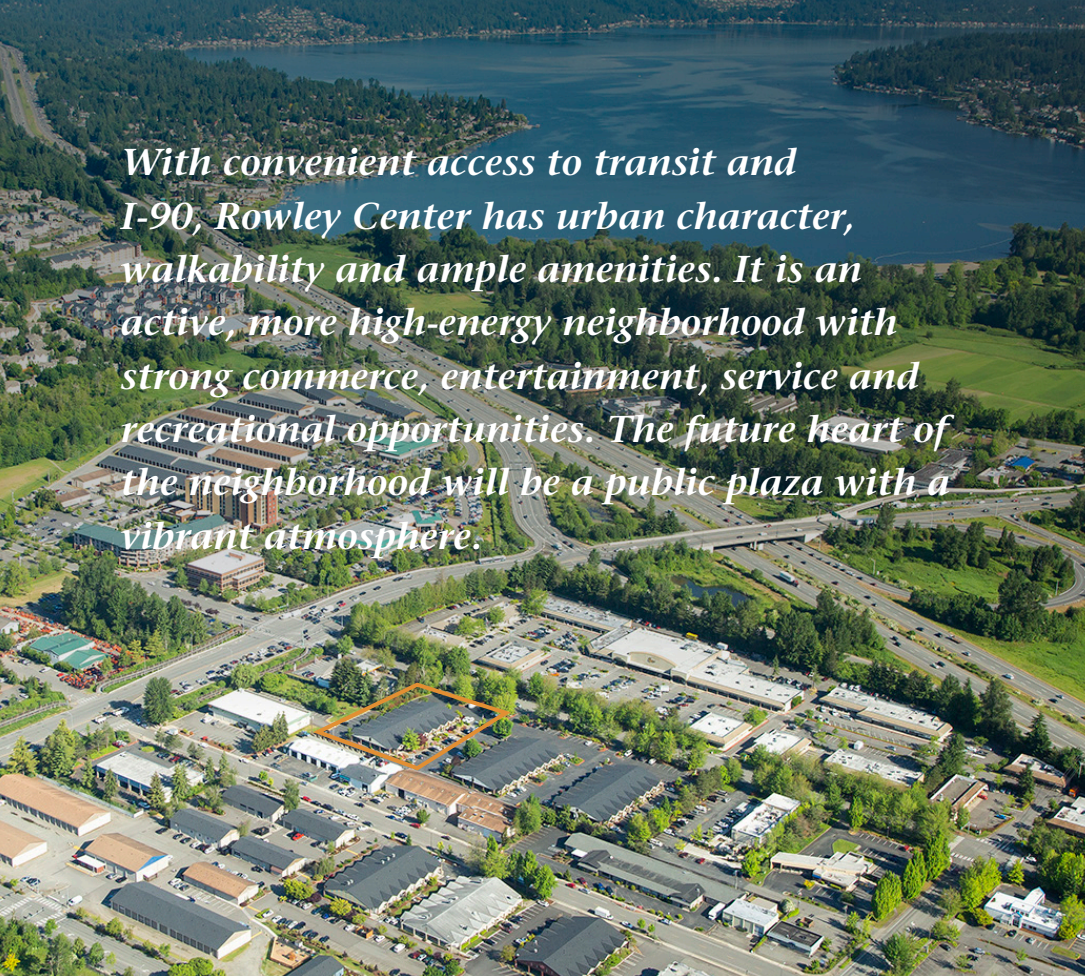
The information contained herein has been obtained from reliable sources, but is not guaranteed. Photos may not reflect available space.

For leasing information, contact:

Kelly Richardson
Designated Broker
425-395-9577

kellyr@rowleyproperties.com





With convenient access to transit and I-90, Rowley Center has urban character, walkability and ample amenities. It is an active, more high-energy neighborhood with strong commerce, entertainment, service and recreational opportunities. The future heart of the neighborhood will be a public plaza with a vibrant atmosphere.



Community known for innovation & start-ups



Close to upscale hotels and dining



Adjacent to Transit Center



20 minutes to Seattle, 15 minutes to Bellevue



1595

NW GILMAN BLVD.

SUITE 7

ISSAQUAH, WA

**For leasing
information, contact:**

Kelly Richardson
Designated Broker

425-395-9577

kellyr@rowleyproperties.com



Rowley Properties is a third-generation, family business that owns, develops and manages approximately 80 contiguous acres in downtown Issaquah.

Nobody knows Issaquah better than Rowley Properties.

1595 NW Gilman Blvd., Suite 1
Issaquah, WA 98027
(425) 392-6407

Office hours: Monday-Saturday;
8:00am-5:00pm

rowleyproperties.com