



1505

NW GILMAN BLVD.
SUITE 1B
ISSAQUAH, WA



*Excellent
Gilman Blvd.
Visibility*

For Lease
1,017 sq. ft.
Office Space

FOR LEASE: 1,017 SF Office Space

Neighborhood Amenities

- 20 Minutes to Seattle, 15 Minutes to Bellevue, 5 Minutes to Trails
- Located at the gateway to Issaquah at I-90 Exit 15
- Excellent access via SR 900, Gilman Blvd and I-90 with 128k vehicles/day
- Walking distance to restaurants, banks, fitness options and retail
- Proximity to Issaquah Transit Center
- Active, high-energy neighborhood with strong commerce
- Entertainment & recreational options nearby
- Close to Lake Sammamish & Tibbetts Valley Park

Building Amenities

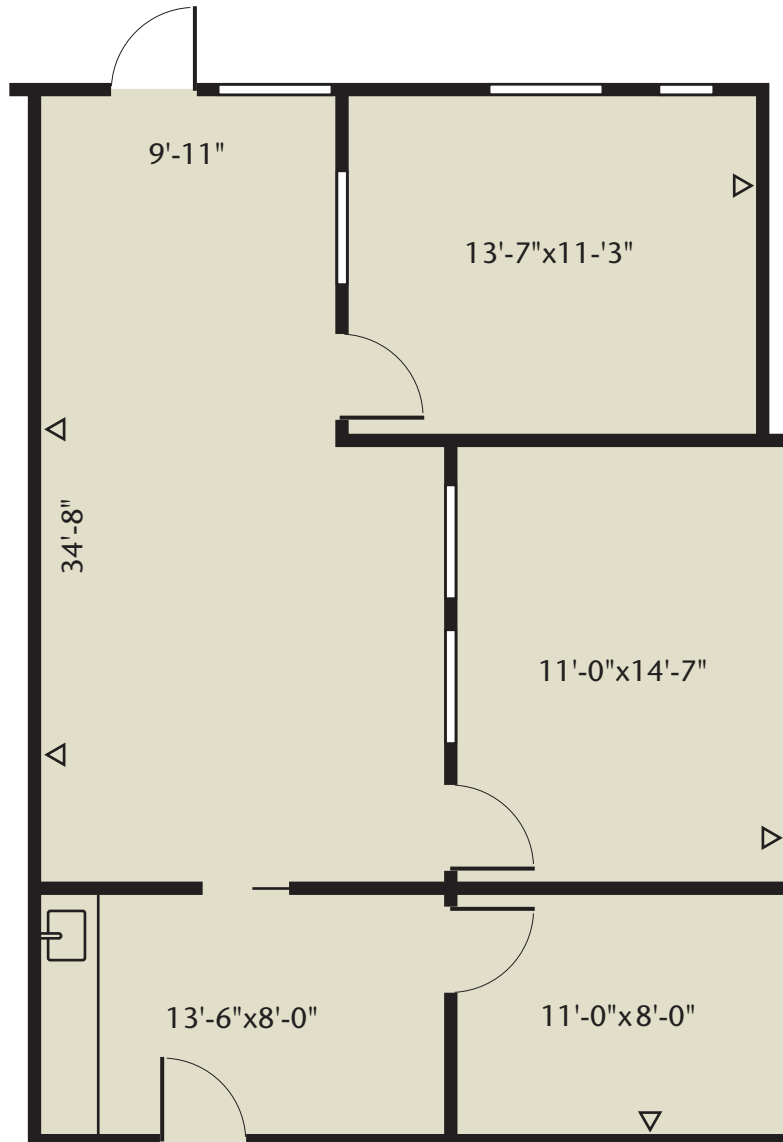
- Parking 4/1000
- Ample Free Parking

Space Features

- Operable windows allow fresh air
- Three private offices and/or conference room
- Breakroom/kitchenette
- Lobby/reception area



Floor Plan

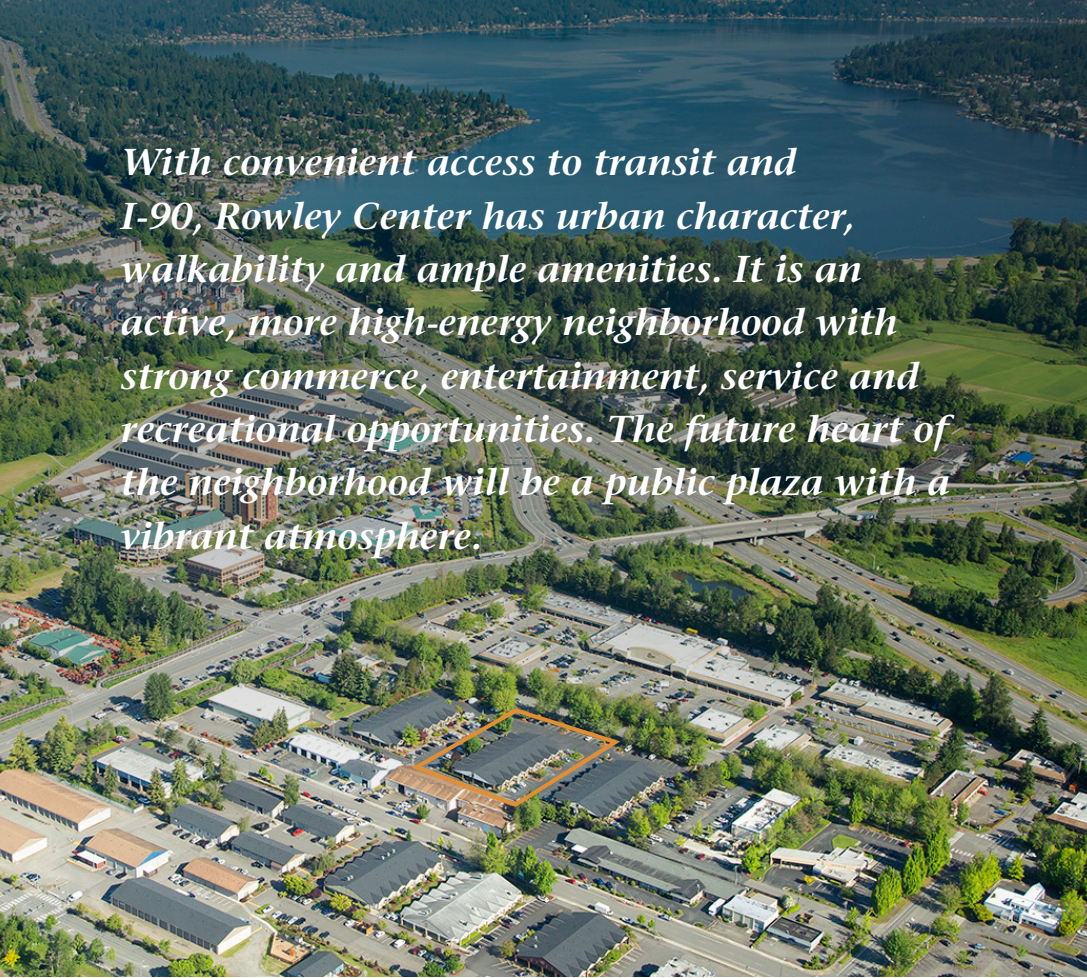


The information contained herein has been obtained from reliable sources, but is not guaranteed. Photos may not reflect available space.

For leasing information,
contact:

Kelly Richardson
Designated Broker
425-395-9577
kellyr@rowleyproperties.com





Community known for innovation & start-ups



Close to upscale hotels and dining



Adjacent to Transit Center



20 minutes to Seattle, 15 minutes to Bellevue



1505

NW GILMAN BLVD.
SUITE 1B
ISSAQUAH, WA

**For leasing
information, contact:**

Kelly Richardson
Designated Broker
425-395-9577
kellyr@rowleyproperties.com



Rowley Properties is a third-generation, family business that owns, develops and manages approximately 80 contiguous acres in downtown Issaquah.

Nobody knows Issaquah better than Rowley Properties.

1595 NW Gilman Blvd., Suite 1
Issaquah, WA 98027
(425) 392-6407

Office hours: Monday-Saturday;
8:00am-5:00pm

rowleyproperties.com